

KLH®

PROJECT

THE BARCELONA LIBRARY

LOCATION
Barcelona,
Spain

DISTRICT'S CENTRAL LIBRARY

.....

The Gabriel García Márquez Library is in a densely populated district of Barcelona. The geometry of the building is designed to fit seamlessly into its surroundings and reflect the characteristic urban corner development of the metropolis. The structure itself is designed to resemble a stack of open books. The building was organized around a spacious, triangular courtyard. A main staircase connects all areas of use.

The ceilings, main beams and load-bearing walls were supplied from prefabricated KLH® – CLT elements, creating dense hybrid timber structures.

This structure makes it possible to create large and open spaces for flexible and social use.

PROJECT INFO

KLH® – CLT VOLUME
7,361 m² / 1,202 m³

STORED CARBON

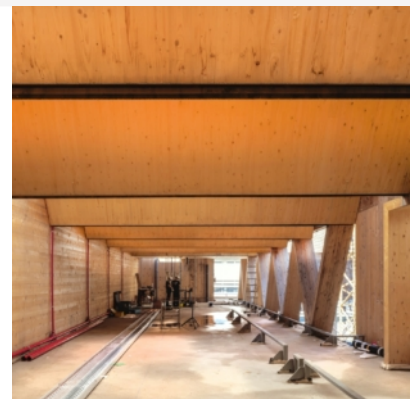
915 tonnes (regrowth time in Austria 8 minutes)

AWARDS

[Barcelona City Architecture Award](#)

[Finalist: public library of the year 2023](#)

PUBLIC BUILDINGS







.....
CLIENT

BIMSA
Municipality of Barcelona

.....
TIMBER STRUCTURE ENGINEER

Miguel Nevado

.....
ARCHITECTURE

SUMA Arquitectura
www.sumaarquitectura.eu

.....
GENERAL CONTRACTOR

VIAS + CRC

.....
WOODWORK

Velima System sl
www.velimasytem.com

.....
PHOTOGRAPHY CREDITS

Jesús Granada