



PROJECT

FORTE TOWER MELBOURNE

LOCATION
Melbourne,
Australia

MULTI-STORY RESIDENTIAL BUILDINGS

PROJECT DESCRIPTION

.....

The Forté also known as C2East building is Australia's first CLT high rise apartment building and still the tallest in the world. It is over 10 storeys offering 23 residential apartments with ground floor retail. The tower was designed to reflect the contemporary inner-city lifestyle of Victoria Harbour while combining environmental initiatives. Its a showpiece for natural and new, it is where modern architecture meets a natural building material called Cross Laminated Timber (CLT), which unlocked a new era in the future of sustainable development and healthier living. Sustainability and a lowered environmental footprint were the key drivers behind the use of engineered timber, referred to as Cross Laminated Timber (CLT), a building material that enables the permanent capture of carbon so buildings become essentially 'carbon sinks'.

CARBON CALCULATION

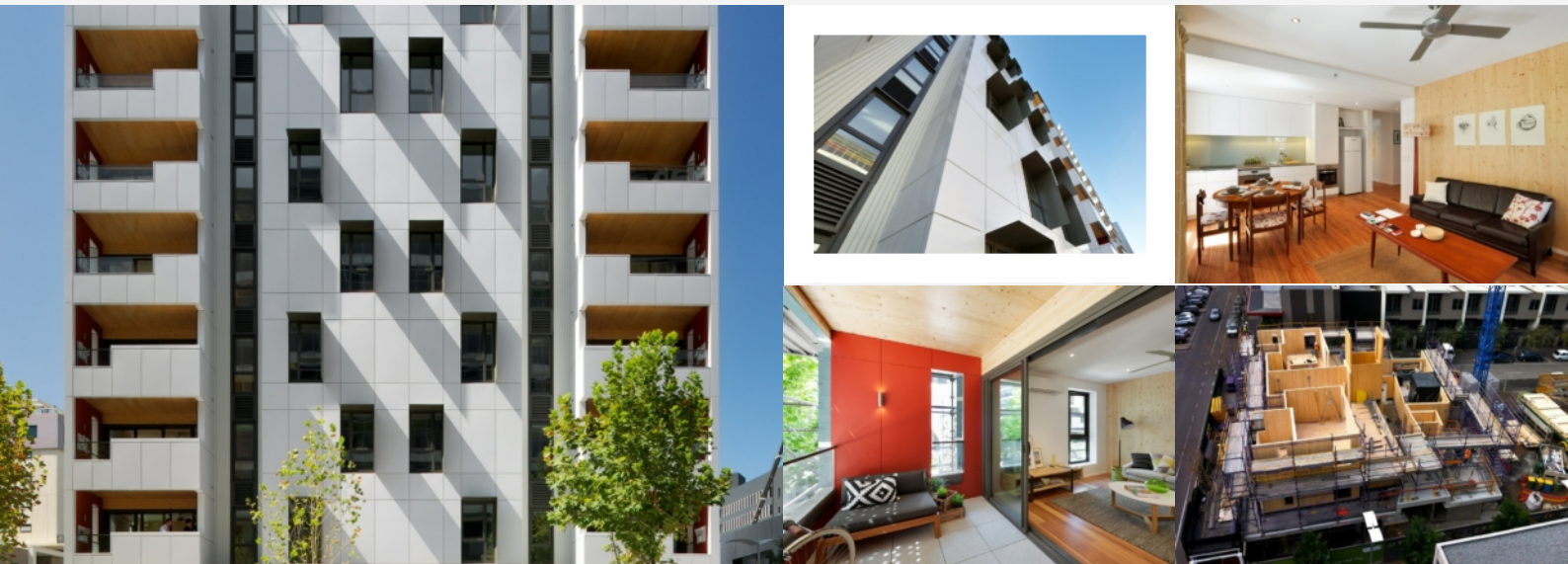
Total stores/sequestered carbon in the KLH@ - CLT for Project name is 1400 tonnes

PROJECT DETAILS

Project Value: Undisclosed
Project Dates: 2012 - 2012
KLH UK Services: Design Consultancy, Supply and Erect
Timber Volume: 1025.32 m³
Build Period: 16 weeks

AMOUNT AND SIZE OF THE APARTMENTS

23 Apartments, Net living area 59 - 102 m²



.....

DESIGN AND CONSTRUCTION

Lend Lease
www.lendlease.com

.....

TIMBER ENGINEERING

KLH UK Ltd.
www.klhuk.com

.....

PHOTOGRAPHER

Emma Cross Photographer
www.emmacross.com.au