

 KLH®

PROJECT

## ASCENT

LOCATION

Milwaukee,  
Wisconsin,  
USA

## WORLD'S TALLEST MASS TIMBER HYBRID BUILDING

.....

The mixed-use building includes 259 apartments, a pool on the sixth floor and a residential level on the top floor. Initially, the tower in Milwaukee was supposed to be around 70 m high with 21 stories. But during the planning process, 4 stories were added, which gave Ascent eventually the height of 86.5 meters and the title of the tallest timber hybrid in the world.

At the base of the structure is a six-story parking podium with 19 stories of mass timber built on top. The project features 50% exposed timber columns, beams and ceilings. Timber construction works have been started in June 2021 and just six months later, general contractor C.D. Smith Construction has topped off the innovative tower at 25 stories. The unique construction process used prefabricated columns and beams with factory-integrated connectors, making the construction process approximately 25% faster.

Mass Timber construction is an energy-efficient alternative to high-rise and commercial buildings. Wood is a natural, renewable and sustainable material for building, with a lighter carbon footprint than steel or concrete. Not only does it have positive environmental impacts, but it has also proven to be structurally strong and meet the same performance and life safety standards as concrete and steel structures.

### PROJECT DATA

Completed in: 2022

Height: 284 ft / 86,5 m

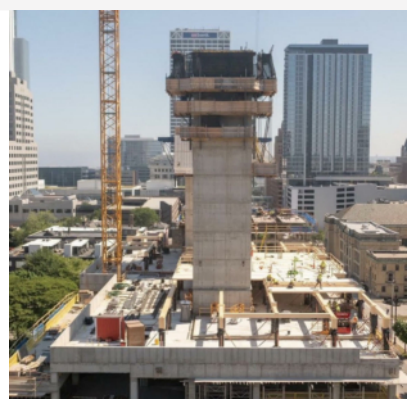
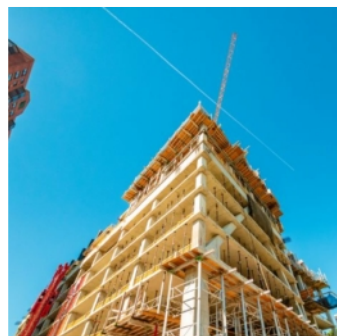
Size: 493,000 ft<sup>2</sup> / 46 000 m<sup>2</sup>

KLH® – CLT volume: 335,554 ft<sup>2</sup> / 32 000 m<sup>2</sup>

### AWARDS

[2023 Winner Wood Design Award](#)

[2023 Winner "Structure Award" Council on Tall Buildings and Urban Habitat \(CTBUH\)](#)











.....  
**CLIENT**

Timberlab Inc.

.....  
**DEVELOPER**

New Land Enterprises

.....  
**ARCHITECT**

Korb + Associates Architects

.....  
**STRUCTURAL DESIGN**

Thornton Tomasetti

.....  
**GENERAL CONSTRUCTOR**

C.D. Smith Construction

.....  
**PHOTOGRAPHY**

Korb + Associates Architects  
C.D. Smith Construction  
Thornton Tomasetti  
Ascent MKE | Nate Vomhof

For further information [+43 \(0\) 3588 8835](tel:+43035888835) or [office@klh.at](mailto:office@klh.at)